

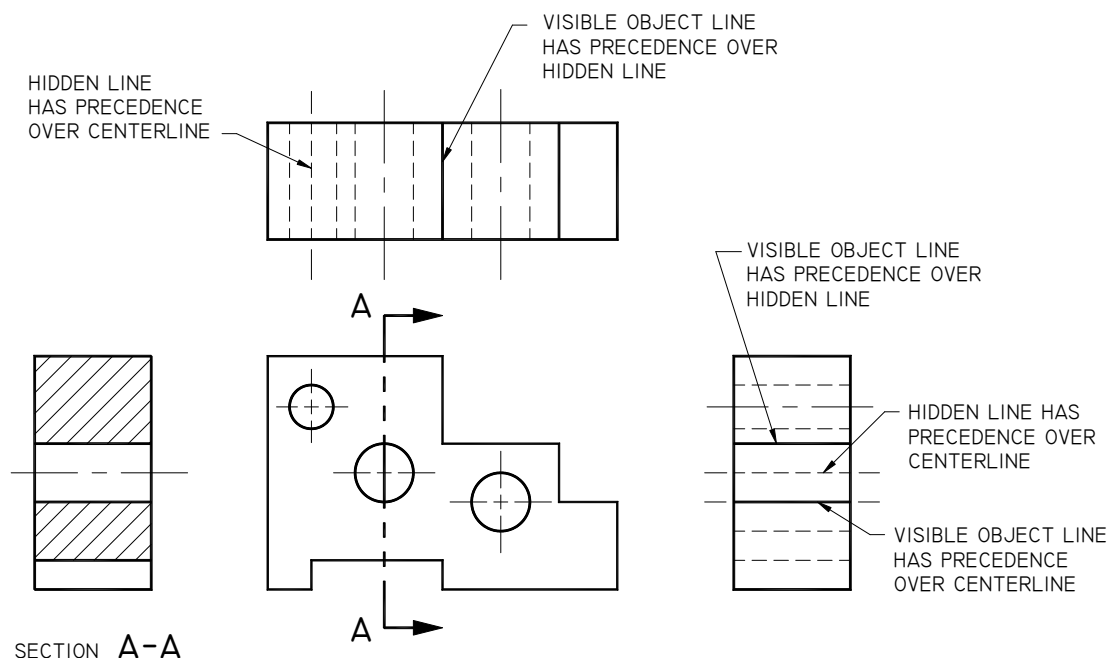
**TERMS TO BE DEFINED OR IDENTIFIED FOR COMPETENCY 7:**

- Perpendicular
- Feature
- Front view
- Visible line
- Line precedence
- Fillet
- Round
- Runout
- Chamfer
- Break corner

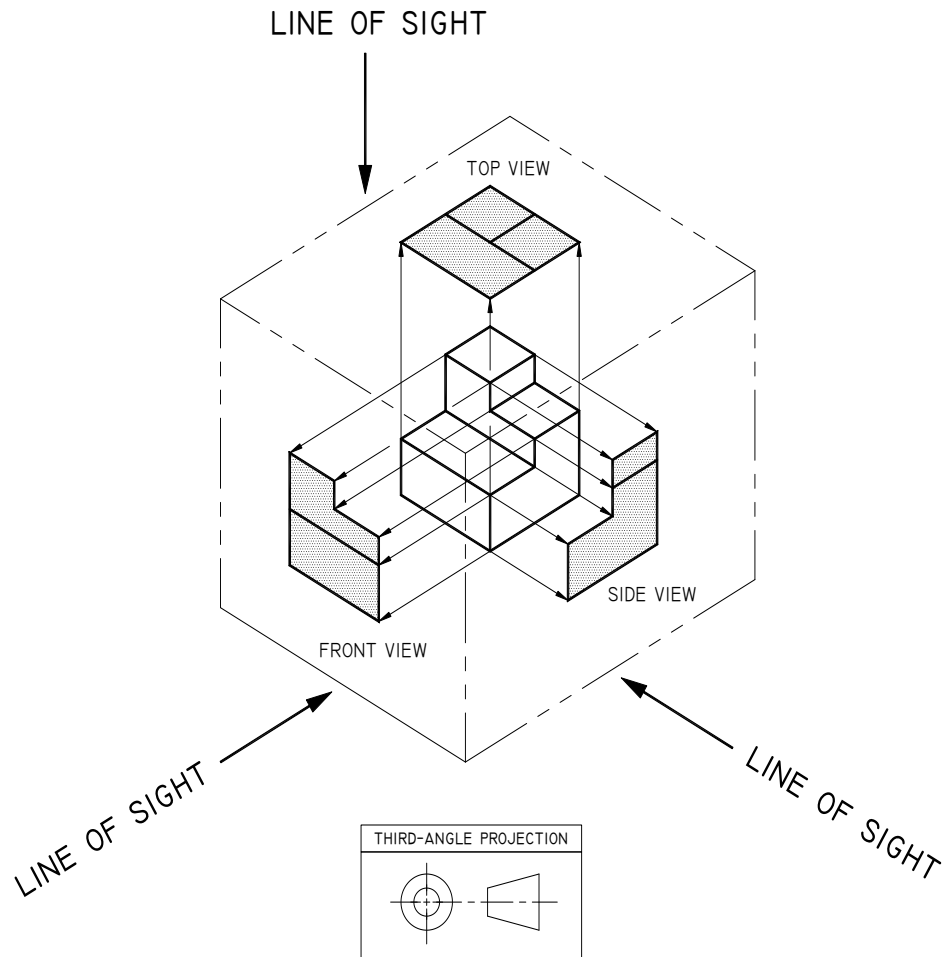
**ITEMS TO BE REVIEWED for COMPETENCY 7:**

- Number of views required for drawing
- Selecting the proper front view
- Line precedence in orthographic views
- What dimensions are found on a particular orthographic view
- Position/layout of orthographic views

**PRECEDENCE OF LINES USED IN DRAFTING**



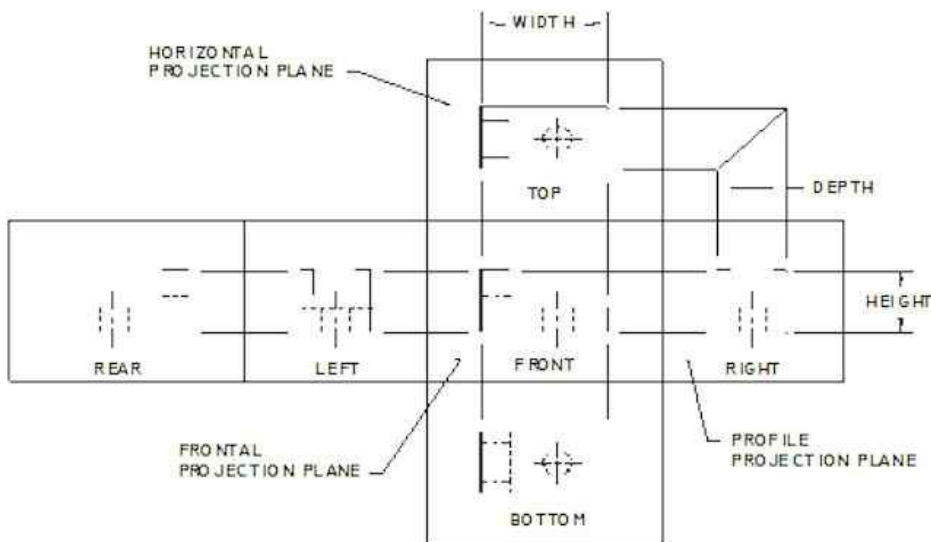
**THIRD ANGLE PROJECTION**



**It is recommended that the view projection symbol be used in or in conjunction with the title block**

1. Third angle projection is used in the United States and some Canadian Drawings.
2. Views are projected on planes between the part and the person viewing the object.
3. Third angle projections are usually drawn in feet & inches, decimal feet & inches and sometimes metric.

**PROJECTION PLANES:**



**SAMPLE REVIEW QUESTIONS**

1. Hidden lines should take precedence over all other lines.  
True  
False
2. Of the lines listed, which would take precedence over all the others?  
Cutting plane lines  
Break lines  
Dimension lines  
Extension lines
3. When drawing opposite parts, a note is required to state if the indicated object is shown left handed or right handed.  
True  
False